

H1 PY-1/DMSO  
MMJABAL

11.825  
11.314

3.346  
2.508  
2.287  
2.272  
2.257  
1.440  
1.425  
1.410  
1.395  
1.380  
1.366  
0.880  
0.865  
0.850



3

Current Data Parameters H1 PY-1/DMSO  
NAME drelemam-PY-1 MMJABAL  
EXPNO 1  
PROCNO 1

F2 - Acquisition Parameters  
Date\_ 20040508  
Time 9.43  
INSTRUM av500  
PROBHD 5 mm BBO BB-1H  
PULPROG zg30  
TD 65536  
SOLVENT DMSO  
NS 16  
DS 0  
SWH 10000.000 Hz  
FIDRES 0.152588 Hz  
AQ 3.2769001 sec  
RG 143.7  
DW 50.000 usec  
DE 6.00 usec  
TE 300.0 K  
D1 1.00000000 sec

===== CHANNEL f1 =====  
NUC1 1H  
P1 10.40 usec  
PL1 -3.00 dB  
SFO1 500.1330008 MHz

F2 - Processing parameters  
SI 32768  
SF 500.1300000 MHz  
WDW EM  
SSB 0  
LB 0.30 Hz  
GB 0  
PC 1.40

15 14 13 12 11 10 9 8 7 6 5 4 3 2 1 0 -1 -2 ppm

1.00  
1.06

0.43  
2.81  
2.15  
2.19  
3.28

H1 PY-1/DMSO  
MMJABAL



Current Data Parameters  
NAME drelemam-PY-1  
EXPNO 1  
PROCNO 1

H1 PY-1/DMSO  
MMJABAL

F2 - Acquisition Parameters

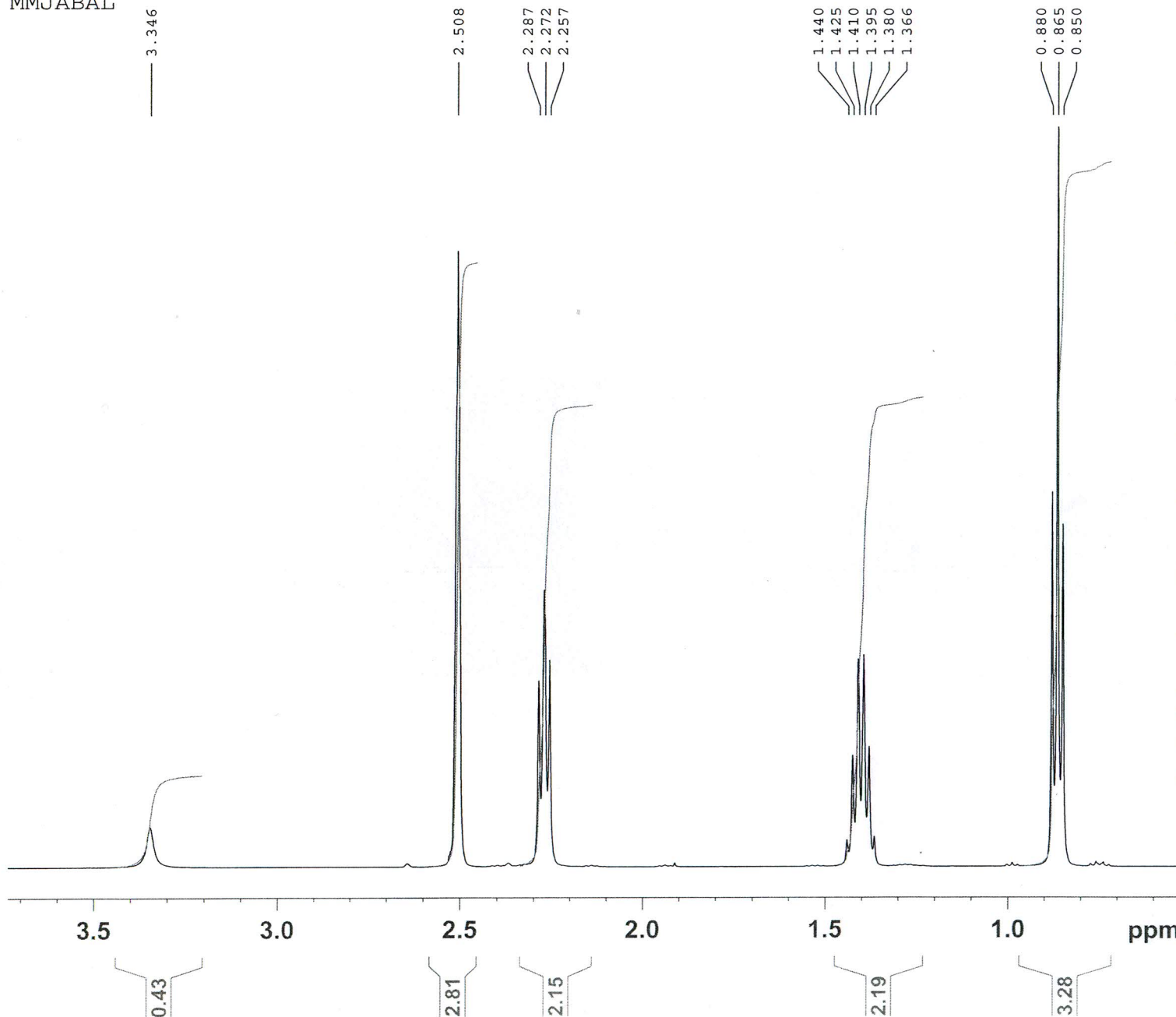
Date\_ 20040508  
Time 9.43  
INSTRUM av500  
PROBHD 5 mm BBO BB-1H  
PULPROG zg30  
TD 65536  
SOLVENT DMSO  
NS 16  
DS 0  
SWH 10000.000 Hz  
FIDRES 0.152588 Hz  
AQ 3.2769001 sec  
RG 143.7  
DW 50.000 usec  
DE 6.00 usec  
TE 300.0 K  
D1 1.00000000 sec

===== CHANNEL f1 =====

NUC1 1H  
P1 10.40 usec  
PL1 -3.00 dB  
SFO1 500.1330008 MHz

F2 - Processing parameters

SI 32768  
SF 500.1300000 MHz  
WDW EM  
SSB 0  
LB 0.30 Hz  
GB 0  
PC 1.40



C13 PY-1/DMSO  
MMJABAL



Current Data Parameters  
NAME drelemam-PY-1  
EXPNO 2  
PROCNO 1

F2 - Acquisition Parameters  
Date\_ 20040508  
Time 10.02  
INSTRUM av500  
PROBHD 5 mm BBO BB-1H  
PULPROG zgpg30  
TD 65536  
SOLVENT DMSO  
NS 353  
DS 4  
SWH 27777.777 Hz  
FIDRES 0.423855 Hz  
AQ 1.1797160 sec  
RG 181  
DW 18.000 usec  
DE 6.00 usec  
TE 300.0 K  
D1 2.00000000 sec  
d11 0.03000000 sec  
d12 0.00002000 sec

===== CHANNEL f1 =====  
NUC1 13C  
P1 5.80 usec  
PL1 -2.00 dB  
SFO1 125.7703643 MHz

===== CHANNEL f2 =====  
CPDPRG2 waltz16  
NUC2 1H  
PCPD2 80.00 usec  
PL2 -3.00 dB  
PL12 15.00 dB  
PL13 15.00 dB  
SFO2 500.1320005 MHz

F2 - Processing parameters  
SI 32768  
SF 125.7577890 MHz  
WDW EM  
SSB 0  
LB 1.00 Hz  
GB 0  
PC 1.00

